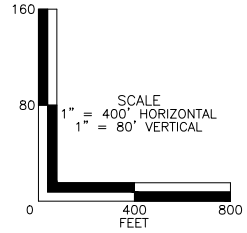


CFR PART 77 PRIMARY SURFACE: RUNWAY 10-28						
ID	OBSTRUCTION TYPE	ELEVATION	SURFACE HEIGHT	PENETRATION	ACTION	COMPLETION DATE
059	GROUND	922.8	921.9	0.7	NONE	12-31-21
060	GROUND	923.3	921.9	1.4	NONE	12-31-21
061	GROUND	923.9	922.3	1.6	NONE	12-31-21
062	GROUND	926.0	923.4	2.6	NONE	12-31-21
063	GROUND	924.8	923.7	1.1	NONE	12-31-21
064	GROUND	927.1	924.6	2.5	NONE	12-31-21
066	GROUND	926.2	925.2	1.0	NONE	12-31-21
067	GROUND	927.7	925.7	2.0	NONE	12-31-21
069	GROUND	927.5	926.4	1.1	NONE	12-31-21
070	GROUND	926.2	926.9	1.3	NONE	12-31-21

CFR PART 77 TRANSITIONAL SURFACE: RUNWAY 10-28						
ID	OBSTRUCTION TYPE	ELEVATION	SURFACE HEIGHT	PENETRATION	ACTION	COMPLETION DATE
058	LIGHT POLE	960.8	960.5	0.3	LIGHT	12-31-21
055	TREE	950.7	950.5	0.2	TRIM/REMOVE	12-31-21
068	POLE	966.2	960.8	5.4	LIGHT	12-31-21

\* AIRPORT DESIGN APPROACH SURFACE (#3) FROM TABLE 3-2 IN EB#99 APPROACH END OF RUNWAYS EXPECTED TO SERVE LARGE AIRPLANES (VISUAL DAY/NIGHT).

K:\WB\_Scranton\18085.00 Master Plan Update\Drawings\Drawings Set\APPROACH.dwg



LEGEND					
	DESCRIPTION	SYMBOL	DESCRIPTION	SYMBOL	
	RUNWAY SAFETY AREA (RSA)		RUNWAY PROTECTION ZONE (RPZ)		CFR PART 77 OBSTRUCTIONS
	RUNWAY OBJECT FREE AREA (ROFA)		OBSTACLE FREE ZONE (OFZ)		CFR PART 77 VEGETATION OBSTRUCTIONS
	EXISTING AIRPORT PROPERTY		PROPOSED NAVAID CRITICAL AREA		CFR PART 77 TERRAIN OBSTRUCTIONS
	PROPOSED AIRPORT PROPERTY		PROPOSED AIRPORT PAVEMENT		
	EXISTING AVIGATION EASEMENT		PROPOSED GROUND VEHICLE PAVEMENT		
	PROPOSED AVIGATION EASEMENT		PROPOSED AIRPORT BUILDINGS		
	RIGHT OF FIRST REFUSAL		FUTURE DEVELOPMENT		
	PARCEL BOUNDARY		TO BE REMOVED		GROUND ELEVATION CONTOURS (10')

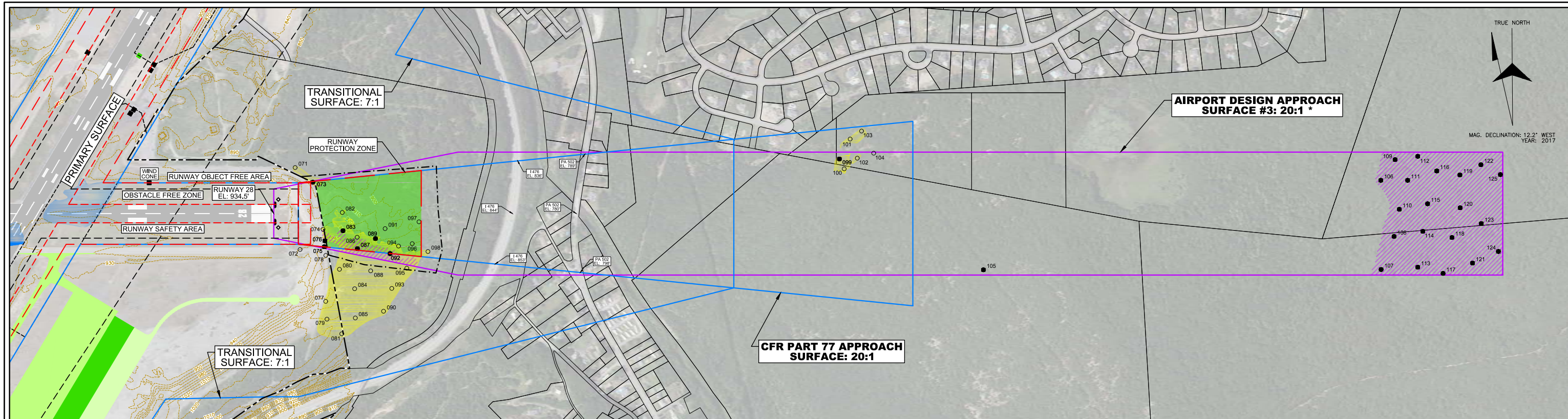
- NOTES:
- ALL POSITIONAL DATA REFERENCES NORTH AMERICAN DATUM OF 1983 (NAD83) AND NORTH AMERICAN VERTICAL DATUM 1988 (NGVD88).
  - AERIAL MAPPING BY WOLPERT, 2016.
  - ROAD ELEVATIONS AS INDICATED INCLUDE CONSIDERATION OF VEHICLES PER CFR PART 77. (15' FOR ROAD, 17' FOR INTERSTATE, 23' FOR RAILROAD)
  - TREES WITHIN 10' OF SURFACE IDENTIFIED AS OBSTRUCTIONS.
  - COMPOSITE GROUND ELEVATION PROFILE LIMITED TO APPROACH SURFACE.

WILKES-BARRE/SCRANTON INTERNATIONAL AIRPORT AVOCA, PENNSYLVANIA			
<b>INNER APPROACH PLAN RUNWAY 10</b>			
REV	DATE	DESCRIPTION	BY SPONSOR
SCALE: 1" = 400'		DESIGN: ZEN	SHEET: 9
DRAWN: RGT		PROJECT: 18085.00	
CHECKED: JLM		DATE: JUNE 2019	



Page intentionally left blank.



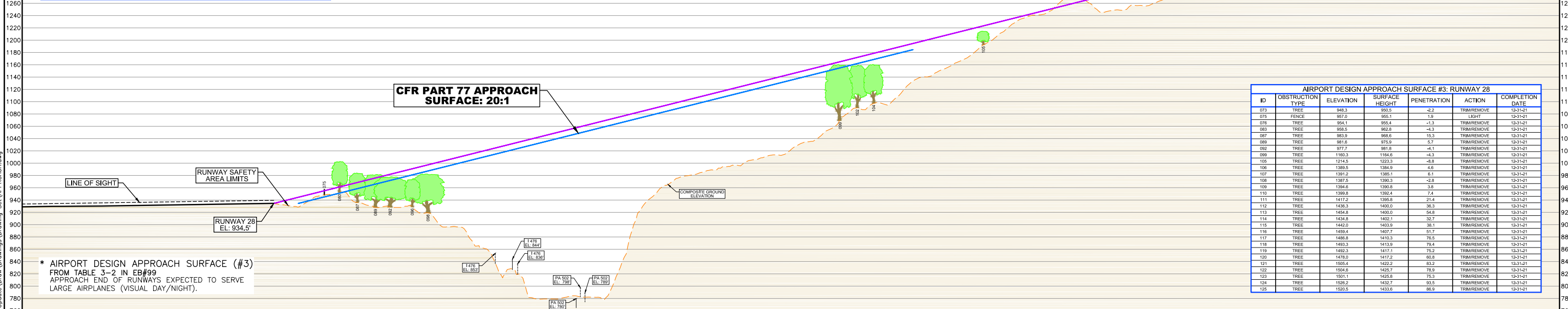


CFR PART 77 APPROACH SURFACE: RUNWAY 28

ID	OBSTRUCTION TYPE	ELEVATION	SURFACE HEIGHT	PENETRATION	ACTION	COMPLETION DATE
073	TREE	948.3	940.5	7.8	TRIM/REMOVE	12-31-21
074	TREE	943.2	944.8	-1.6	TRIM/REMOVE	12-31-21
075	FENCE	957.0	945.1	11.9	LIGHT	12-31-21
076	TREE	954.1	945.4	8.7	TRIM/REMOVE	12-31-21
082	TREE	947.8	952.5	-4.7	TRIM/REMOVE	12-31-21
083	TREE	958.5	952.8	5.7	TRIM/REMOVE	12-31-21
086	TREE	953.7	958.5	-4.8	TRIM/REMOVE	12-31-21
087	TREE	983.9	958.6	25.3	TRIM/REMOVE	12-31-21
089	TREE	981.5	955.9	15.7	TRIM/REMOVE	12-31-21
091	TREE	954.7	959.9	-5.2	TRIM/REMOVE	12-31-21
094	TREE	971.5	975.4	-3.9	TRIM/REMOVE	12-31-21
096	TREE	973.7	980.9	-7.2	TRIM/REMOVE	12-31-21
097	TREE	977.7	983.6	-5.9	TRIM/REMOVE	12-31-21
098	TREE	982.5	987.3	-4.8	TRIM/REMOVE	12-31-21
099	TREE	1150.3	1154.8	-4.5	TRIM/REMOVE	12-31-21
100	TREE	1150.8	1156.7	-5.9	TRIM/REMOVE	12-31-21
101	TREE	1152.2	1159.0	-6.8	TRIM/REMOVE	12-31-21
102	TREE	1159.0	1161.9	-2.9	TRIM/REMOVE	12-31-21
103	TREE	1159.3	1163.7	-4.4	TRIM/REMOVE	12-31-21
104	TREE	1180.5	1188.6	-8.1	TRIM/REMOVE	12-31-21

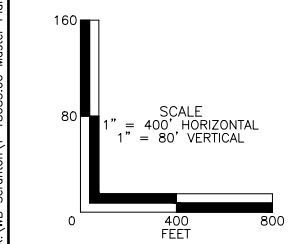
CFR PART 77 TRANSITIONAL SURFACE: RUNWAY 10-28

ID	OBSTRUCTION TYPE	ELEVATION	SURFACE HEIGHT	PENETRATION	ACTION	COMPLETION DATE
071	TREE	946.7	952.2	-5.5	TRIM/REMOVE	12-31-21
072	TREE	948.4	941.2	7.2	TRIM/REMOVE	12-31-21
077	TREE	1018.0	1008.9	9.1	TRIM/REMOVE	12-31-21
078	FENCE	967.6	955.5	12.1	LIGHT	12-31-21
079	TREE	1043.6	1029.9	13.7	TRIM/REMOVE	12-31-21
080	TREE	1020.7	976.6	27.1	TRIM/REMOVE	12-31-21
081	TREE	1045.1	1051.2	-6.1	TRIM/REMOVE	12-31-21
084	TREE	1020.2	1002.6	17.6	TRIM/REMOVE	12-31-21
085	TREE	1033.3	1036.8	-3.5	TRIM/REMOVE	12-31-21
088	TREE	1020.0	996.4	13.6	TRIM/REMOVE	12-31-21
090	TREE	1035.6	1027.1	-8.5	TRIM/REMOVE	12-31-21
092	TREE	977.7	972.0	5.7	TRIM/REMOVE	12-31-21
093	TREE	1015.7	1013.0	2.7	TRIM/REMOVE	12-31-21
095	TREE	992.9	993.9	-1.0	TRIM/REMOVE	12-31-21



AIRPORT DESIGN APPROACH SURFACE #3: RUNWAY 28

ID	OBSTRUCTION TYPE	ELEVATION	SURFACE HEIGHT	PENETRATION	ACTION	COMPLETION DATE
073	TREE	948.3	950.5	-2.2	TRIM/REMOVE	12-31-21
075	FENCE	957.0	955.1	1.9	LIGHT	12-31-21
076	TREE	954.1	956.4	-2.3	TRIM/REMOVE	12-31-21
083	TREE	958.5	952.8	5.7	TRIM/REMOVE	12-31-21
087	TREE	983.9	968.6	15.3	TRIM/REMOVE	12-31-21
089	TREE	981.5	975.9	5.7	TRIM/REMOVE	12-31-21
091	TREE	954.7	959.9	-5.2	TRIM/REMOVE	12-31-21
099	TREE	1150.3	1164.8	-4.5	TRIM/REMOVE	12-31-21
100	TREE	1214.5	1223.3	-8.8	TRIM/REMOVE	12-31-21
106	TREE	1389.5	1384.9	4.6	TRIM/REMOVE	12-31-21
107	TREE	1391.2	1385.1	6.1	TRIM/REMOVE	12-31-21
108	TREE	1387.5	1390.3	-2.8	TRIM/REMOVE	12-31-21
109	TREE	1394.6	1390.8	3.8	TRIM/REMOVE	12-31-21
110	TREE	1399.8	1392.4	7.4	TRIM/REMOVE	12-31-21
111	TREE	1417.2	1395.8	21.4	TRIM/REMOVE	12-31-21
112	TREE	1436.3	1400.0	36.3	TRIM/REMOVE	12-31-21
113	TREE	1454.8	1400.0	54.8	TRIM/REMOVE	12-31-21
114	TREE	1434.8	1402.1	32.7	TRIM/REMOVE	12-31-21
115	TREE	1442.0	1402.9	39.1	TRIM/REMOVE	12-31-21
116	TREE	1459.4	1407.7	51.7	TRIM/REMOVE	12-31-21
117	TREE	1486.8	1410.3	76.5	TRIM/REMOVE	12-31-21
118	TREE	1482.3	1413.9	78.4	TRIM/REMOVE	12-31-21
119	TREE	1492.3	1417.1	75.2	TRIM/REMOVE	12-31-21
120	TREE	1476.0	1417.2	68.8	TRIM/REMOVE	12-31-21
121	TREE	1508.4	1422.2	86.2	TRIM/REMOVE	12-31-21
122	TREE	1504.8	1425.7	78.9	TRIM/REMOVE	12-31-21
123	TREE	1501.1	1426.8	75.7	TRIM/REMOVE	12-31-21
124	TREE	1526.2	1432.7	93.5	TRIM/REMOVE	12-31-21
125	TREE	1520.5	1433.6	86.9	TRIM/REMOVE	12-31-21



LEGEND

DESCRIPTION	SYMBOL	DESCRIPTION	SYMBOL
RUNWAY SAFETY AREA (RSA)	---	RUNWAY PROTECTION ZONE (RPZ)	---
RUNWAY OBJECT FREE AREA (ROFA)	---	OBSTACLE FREE ZONE (OFZ)	---
EXISTING AIRPORT PROPERTY	---	PROPOSED NAVAID CRITICAL AREA	---
PROPOSED AIRPORT PROPERTY	---	PROPOSED AIRPORT PAVEMENT	---
EXISTING AVIATION EASEMENT	---	PROPOSED GROUND VEHICLE PAVEMENT	---
PROPOSED AVIATION EASEMENT	---	PROPOSED AIRPORT BUILDINGS	---
RIGHT OF FIRST REFUSAL	---	FUTURE DEVELOPMENT	---
PARCEL BOUNDARY	---	TO BE REMOVED	---
		GROUND ELEVATION CONTOURS (10')	---

NOTES:

- ALL POSITIONAL DATA REFERENCES NORTH AMERICAN DATUM OF 1983 (NAD83) AND NORTH AMERICAN VERTICAL DATUM 1988 (NGVD88).
- AERIAL MAPPING BY WOLPERT, 2016.
- ROAD ELEVATIONS AS INDICATED INCLUDE CONSIDERATION OF VEHICLES PER CFR PART 77.
- TREES WITHIN 10' OF SURFACE IDENTIFIED AS OBSTRUCTIONS.
- COMPOSITE GROUND ELEVATION PROFILE LIMITED TO APPROACH SURFACE.

WILKES-BARRE/SCRANTON INTERNATIONAL AIRPORT  
AVOCA, PENNSYLVANIA

**INNER APPROACH PLAN  
RUNWAY 28**

SCALE: 1" = 400' DESIGN: ZEN SHEET: 10

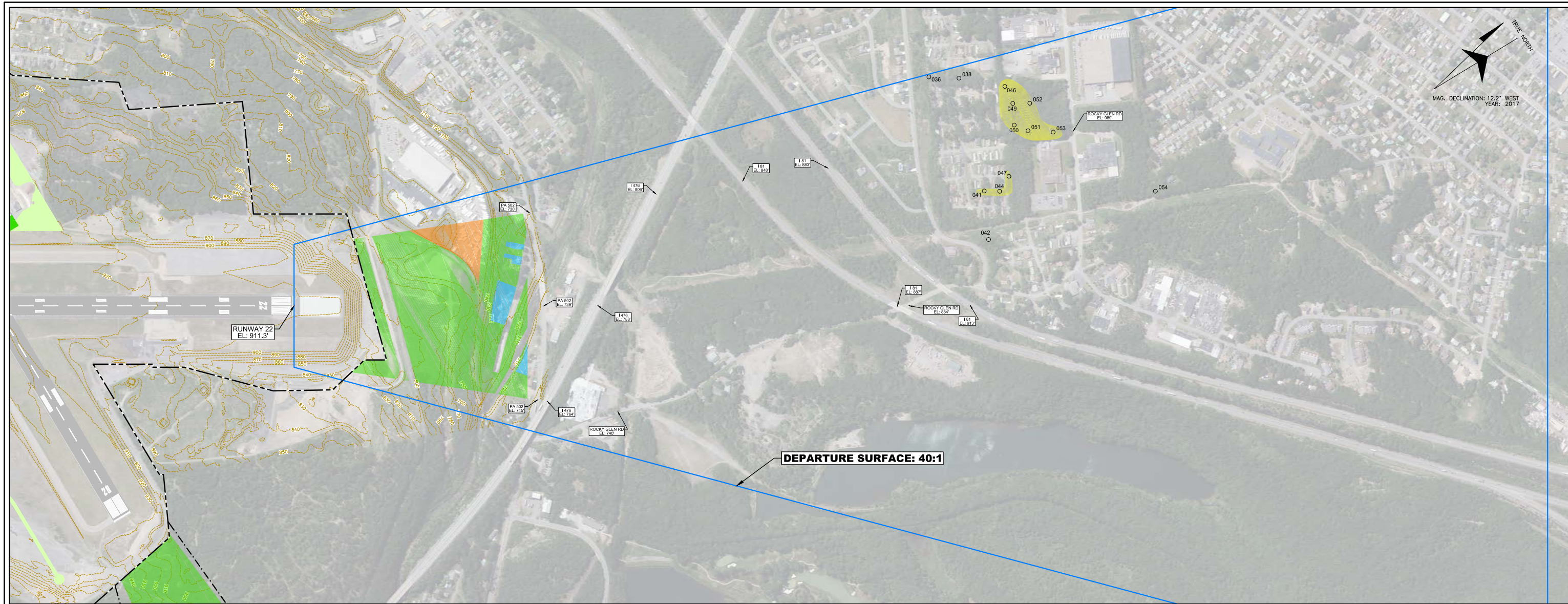
DRAWN: RGT PROJECT: 18085.00  
CHECKED: JLM DATE: JUNE 2019

McFarland Johnson  
49 COURT STREET, METROCENTER, PO BOX 1980  
BINGHAMTON, NEW YORK 13902 www.mjinc.com

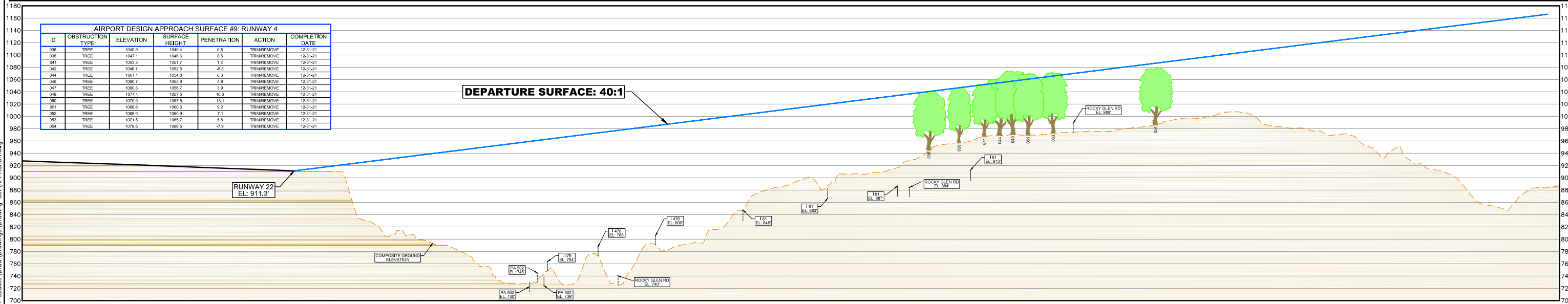
REV	DATE	DESCRIPTION	BY	SPONSOR

Page intentionally left blank.





TRUE NORTH  
MAG. DECLINATION: 12.2' WEST  
YEAR: 2017



ID	OBSTRUCTION TYPE	ELEVATION	SURFACE HEIGHT	PENETRATION	ACTION	COMPLETION DATE
036	TREE	1040.9	1045.4	0.5	TRIM/REMOVE	12-31-21
038	TREE	1047.1	1048.6	0.5	TRIM/REMOVE	12-31-21
041	TREE	1053.5	1051.7	1.8	TRIM/REMOVE	12-31-21
042	TREE	1048.7	1052.5	-4.8	TRIM/REMOVE	12-31-21
044	TREE	1061.1	1054.8	6.3	TRIM/REMOVE	12-31-21
046	TREE	1060.7	1055.9	4.8	TRIM/REMOVE	12-31-21
047	TREE	1050.6	1056.7	-3.9	TRIM/REMOVE	12-31-21
049	TREE	1074.1	1052.5	16.6	TRIM/REMOVE	12-31-21
050	TREE	1070.9	1057.8	13.1	TRIM/REMOVE	12-31-21
051	TREE	1069.8	1060.6	9.2	TRIM/REMOVE	12-31-21
052	TREE	1068.0	1060.9	7.1	TRIM/REMOVE	12-31-21
053	TREE	1071.5	1065.7	5.8	TRIM/REMOVE	12-31-21
054	TREE	1078.6	1066.5	-7.9	TRIM/REMOVE	12-31-21

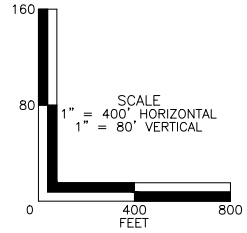
LEGEND					
	DESCRIPTION	SYMBOL	DESCRIPTION	SYMBOL	
	EXISTING AIRPORT PROPERTY		PROPOSED AIRPORT PAVEMENT		DEPARTURE SURFACE OBSTRUCTIONS
	PROPOSED AIRPORT PROPERTY		PROPOSED GROUND VEHICLE PAVEMENT		DEPARTURE SURFACE VEGETATION OBSTRUCTIONS
	EXISTING AVIGATION EASEMENT		PROPOSED AIRPORT BUILDINGS		OBSTRUCTIONS
	PROPOSED AVIGATION EASEMENT		FUTURE DEVELOPMENT		
	RIGHT OF FIRST REFUSAL		TO BE REMOVED		GROUND ELEVATION CONTOURS (10')

- NOTES:**
- ALL POSITIONAL DATA REFERENCES NORTH AMERICAN DATUM OF 1983 (NAD83) AND NORTH AMERICAN VERTICAL DATUM 1988 (NGVD88).
  - AERIAL MAPPING BY WOLPERT, 2016.
  - ROAD ELEVATIONS AS INDICATED INCLUDE CONSIDERATION OF VEHICLES PER CFR PART 77. (15' FOR ROAD, 17' FOR INTERSTATE, 23' FOR RAILROAD)
  - TREES WITHIN 10' OF SURFACE IDENTIFIED AS OBSTRUCTIONS.
  - COMPOSITE GROUND ELEVATION PROFILE LIMITED TO APPROACH SURFACE.

WILKES-BARRE/SCRANTON INTERNATIONAL AIRPORT AVOCA, PENNSYLVANIA			
<b>DEPARTURE SURFACE PLAN RUNWAY 4</b>			
REV	DATE	DESCRIPTION	BY SPONSOR
SCALE: 1" = 400'		DESIGN: ZEN	SHEET: 11
DRAWN: RGT		PROJECT: 18085.00	<b>11</b>
CHECKED: JLM		DATE: JUNE 2019	



K:\WB\_Scranton\T-18085.00 Master Plan Update\Drawings\Drawings\_Set\APPROCH.dwg



Page intentionally left blank.